

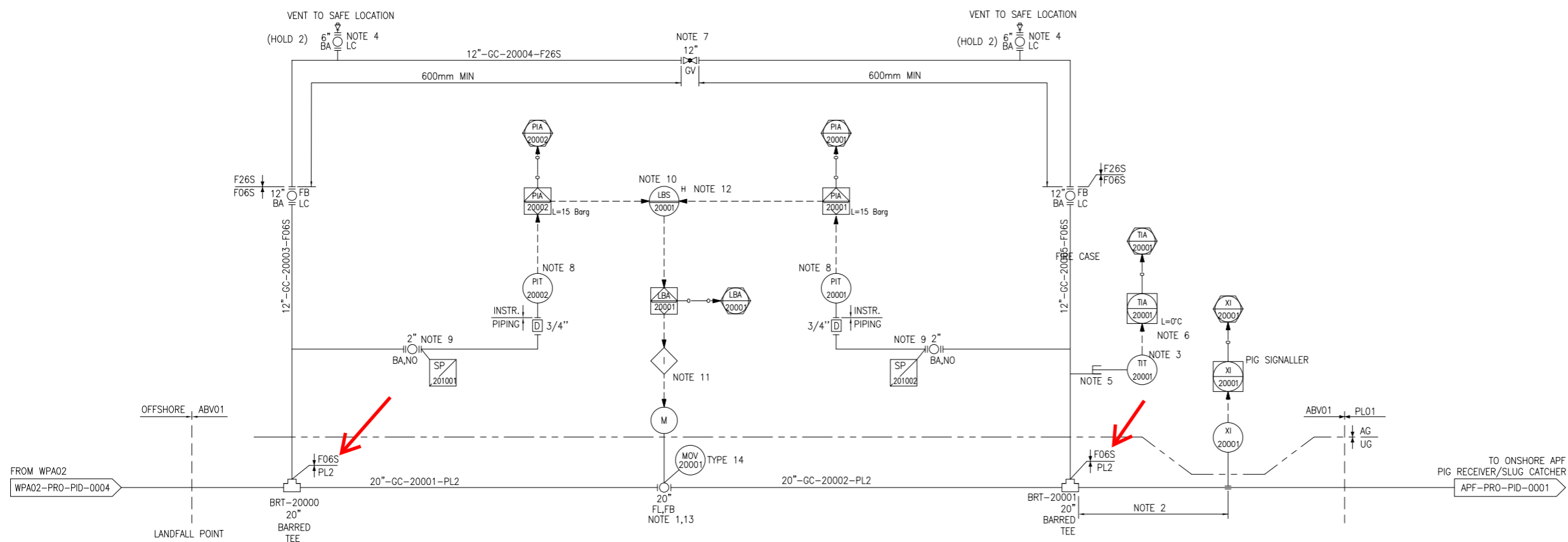
ASK BLOCK VALVE STATION NO.1 (ABV01)

DESIGN PRESSURE : 70 Barg
 WORKING PRESSURE : 25 Barg (HOLD 1)
 DESIGN TEMPERATURE (PIPELINE - PL2) : -10/70 °C
 DESIGN TEMPERATURE (PIPING - F06S) : -29/70 °C
 WORKING TEMPERATURE : 22-33 °C (HOLD 1)
 NORMAL CAPACITY : GAS : 12-120 MMSCF
 OIL : 109-4541 BPD
 WATER : 116-350 BPD

- NOTES:**
1. ALL UNDERGROUND VALVES ARE WELDED.
 2. MAGNETIC TYPE PIG SIGNALLER SHALL BE LOCATED AT A MINIMUM DISTANCE OF ONE INTELLIGENT PIG LENGTH.
 3. TIT SHALL BE LOCATED CLOSED TO THE GLOBE VALVE, DOWNSTREAM OF 12" MANUAL ISOLATION VALVE FOR MONITORING DURING PRESSURIZATION WHICH CAN BE MONITORED DURING NORMAL OPERATING CONDITIONS AS WELL. BUT MIGHT NOT ACCURATE, AS TIT IS NOT ON THE FLOWING PATH.
 4. MIN 6" CONNECTION IS SELECTED TO SUPPORT PRECOMMISSIONING, COMMISSIONING ACTIVITIES AND ALSO PROVIDING PIPING STRENGTH. ADDITIONAL GLOBE VALVE TO BE INSTALLED FOR CONNECTING WITH N2 FOR PURGING / DRYING PURPOSE, LOCAL VENTING RESIDUAL PRESSURE AFTER DEPRESSURIZED PIPELINE VIA APF FLARE SYSTEM (HOLD 3).
 5. PIPE SKIN TEMPERATURE TYPE.
 6. PRELIMINARY PROPOSED SET POINT TO PREVENT ICE FORMATION, SET POINT COULD BE ADJUSTED DOWN TO PIPELINE DESIGN / LOW TESTING TEMPERATURE.
 7. TWO-WAY PRESSURIZATION / EQUALIZATION AT BOTH SIDES OF MOV-20001.
 8. TO BE VISIBLE FROM EQUALIZING GLOBE VALVE.
 9. INSULATING GASKET.
 10. LOCATED IN E&I SHELTER AT ABV01.
 11. AUTOMATIC SHUTDOWN ON APF FACILITIES WHEN MOV-20001 DETECTS LEAKAGE NOT REQUIRED. ONLY LEAK ALARM SIGNAL IS PROVIDED FOR OPERATOR INTERVENTION.
 12. LINE BREAK ALARM LOGIC BASED ON PAL OR PRESSURE DECREASING RATE (0.2 - 20 BARG/MIN) IS PROVIDED WITH TIME DELAY (0-60 MIN) TO ALLOW OPERATOR INTERVENTION/CONFIRMED. DETAIL CONFIGURATION AND SET POINT TO BE CONFIRMED.
 13. INSULATING JOINT ARE PROVIDED VY MOV VENDOR.

HOLDS:

1. THE OPERATION PARAMETER WILL BE CONFIRMED BY SUBSEA PIPELINE CONTRACTOR.
2. SIZE AND THE REQUIRED NUMBER TO BE CONFIRMED BY COMMISSIONING TEAM.



REV	DESCRIPTION	DATE	BY	CHECK	APPR.	CHECK	APPR.
A1	ISSUED FOR REVIEW	01/06/26	WYW	GMJ	XF		

Total or partial reproduction and/or utilization of this document are forbidden without prior written authorization of the owner.

PTTEP International Limited

AUNG SINKHA DEVELOPMENT PROJECT PHASE 1A

ABV01 PIPING AND INSTRUMENT DIAGRAM
BLOCK VALVE STATION NO.1 ABV01

SCALE :	DRAWING NO.	SHEET	REV.
NONE	MM-ASK-1A-ABV01-PRO-PID-0001	1/1	A1